



Wolf LinkEx™ LED Temporary Luminaire

Operation and Maintenance Instructions Please Retain – Read Before Use

EU Declaration of Conformity

The Wolf LinkEx™ LED Temporary Luminaire (LX-400) meets all relevant provisions of the 2014/34/EU Explosive Atmospheres (ATEX Equipment) Directive by virtue of the issued EU type examination certificate, demonstrating compliance with all relevant harmonised standards and essential health and safety requirements.

The Wolf LinkEx™ LED Temporary Luminaire is a leadlamp with a durable enclosure construction of polycarbonate with polyurethane protective rings. Models are available in a variety of input voltages. Approved as Group II, Category 2 equipment for use in zone 1 & 2 potentially explosive gases, vapours, mists and dusts where the T4 temperature class/135°C maximum surface temperature permits.

Certification/Approval code:



Ex eb mb op is IIC T4 Gb (-20°C ≤ Ta ≤ +55°C)

Ex tb op is IIIC T135°C Db IP67*

EU Type examination certificate: **SIRA12ATEX3177X**

Notified body: Baseefa Ltd. Rockhead Business Park,
Staden Lane, Buxton, SK17 9RZ, UK

Notified body number: **1180**

Harmonised standards applied: EN60079-0:2012 + A11:2013, EN60079-7:2015, EN60079-18:2015, EN60079-31:2014, EN60079-28:2015.

Ingress protection level **IP67*** to EN60529:1992

The Wolf LinkEx™ LED Temporary Luminaire is certified compliant with the 2014/30/EU EMC Directive.

To the following harmonised standards BS EN 50015:2013, BS EN 61000-3-2: 2006 +A2:2009, BS EN 61000-3-3: 2013 and BS EN 61547: 2009

Alex Jackson – Managing Director,
Wolf Safety Lamp Company Ltd.

IECEx Scheme Certification

Certificate number: **IECEx SIR 12.0070X**

Certification/Approval code:

Ex eb mb op is IIC T4 Gb (-20°C ≤ Ta ≤ +55°C)

Ex tb op is IIIC T135°C Db IP67*

Standards applied: IEC60079-0:2011, IEC60079-7:2015, IEC60079-18:2014, IEC60079-31:2013, IEC60079-28:2015.

Ingress protection level **IP67*** to IEC60529:1992

*Some variants of plugs/sockets may reduce the IP (Ingress Protection) rating. e.g. ATX and CEAG IP66, Stahl Sockets IP54 rated.

IMPORTANT: SPECIAL CONDITIONS OF USE (X)

- The user/installer shall ensure that, when the Luminaire is fitted with a previously certified plug that has associated special conditions for safe use, they shall take into account any restrictions or conditions for safe use that are applicable to these devices.
- Linkable luminaires fitted with Marechal sockets are certified for low impact risk use only, do not expose to shocks greater than 4 joules.

EQUIPMENT USE

- Read this document carefully before first use of the Wolf LinkEx™ LED Temporary Luminaire and retain for future reference.
- Check the rating label to ensure the Wolf LinkEx™ LED Temporary Luminaire is suitable for the supply provided, ambient temperature present and the environmental conditions.
- In areas where processes that induce circulating currents in the earth system are being undertaken, such as electric welding, it is the user's responsibility to ensure there is no potential difference between the supply earth and the earth local to the luminaire. If a potential difference exists there is a risk of arcing should the luminaires end cap fixings or metal gland come into contact with local metal work. In these situations, the luminaire should also be locally earth bonded with a flexible cable, no longer than 2 meters, with a conductor area of 6mm² minimum. The luminaire must be de-energised during connection or disconnection of the local earth bond. An external Earth Bonding Stud is available in the spares list and can be retro fitted in place of one of the end cap retaining screws.
- Safe Operating Voltage Indicator (SOVI). The Wolf LinkEx™ LED Temporary Luminaire incorporates SOVI technology to highlight to the user if the product is operating outside of the certified maximum and recommended minimum voltage range.

The LX-400SH../T4/. 110/230 versions operating over 264V AC will pulse dim the light. The luminaire must not be used over this voltage.

When operating below 90V AC** the dimmed light will pulse brighter.

**The light output reduces incrementally as the supply voltage falls below 100V AC. The luminaire will shut down if the supply voltage continues to fall.

The LX-400SL../T4/. 24/48 versions operating over 50V AC/DC will pulse dim the light. The luminaire must not be used over this voltage. When operating below 18V AC/DC*** the dimmed light will pulse brighter.

***The light output reduces incrementally as the input voltage falls below 19V AC/DC. The luminaire will shut down if the supply voltage continues to fall. If connecting a large number of luminaires check for SOVI indication on all the lamps in the string. Guidance on lamp connection and extensions can be found at www.wolf-safety.co.uk

- The Wolf LinkEx™ LED Temporary Luminaire enclosure is constructed from polycarbonate parts, check Ex area for potential contact to corrosive and/or aggressive substances.
- The Wolf LinkEx™ LED Temporary Luminaire is class 1 earthed electrical equipment, using 3 core cable.
- Ex e terminal blocks must have all terminals fully tightened down even if a conductor is not fitted. On the six way terminal block, tighten screws to 0.6Nm, on the 4 way terminal block tighten to 1.8Nm.
- ATEX/IECEx certified cable glands must be used and be suitable for the type of cable used.
- Ensure cable is rated for the ambient temperature the Wolf LinkEx™ LED Temporary Luminaire will be used in, standard SY cable is not rated for use below -5°C.
- Inspect cable for damage at regular intervals.
- Damaged equipment should be withdrawn and repaired as necessary before being put back in to service, in accordance with EN60079-17.
- Luminaires must not be opened in Hazardous Areas.
- When the Wolf LinkEx™ LED Temporary Luminaire is used in temporary installations two mounting points must be used, see Wolf bracket fixing kits and associated accessories.
- The Wolf LinkEx™ LED Temporary Luminaire can be carried whilst energised/illuminated.

MAINTENANCE

- Isolate the Wolf LinkEx™ LED Temporary Luminaire from the power supply before carrying out any maintenance work.
- To replace LED strip, replace entire tray (see spares list).
- External plastic components have an anti static coating. Use only a dilute water/detergent mix to clean.
- IMPORTANT. No modifications are permitted to the Wolf LinkEx™ LED Temporary Luminaire, all spare parts must be purchased from the manufacturer, unauthorized modifications or spare parts will invalidate certification.
- Insulation testing must be carried out to IEC, EN standards to the correct rating i.e. 250V DC for 24/48V versions and 500V DC for 110/230VAC versions, Live and neutral cables must be shorted together and the voltage applied between earth and this connection.

ELECTRICAL DATA

MODEL	SOVI Range	Freq Hz	POWER WATT	VA
LX-400SL../T4/..24V	18-50VAC	50/60	27.1	41.2
	18-50VDC		27.1	
LX-400SL../T4/..48V	18-50VAC	50/60	26.9	51.2
	18-50VDC		26.9	
LX-400SH../T4/..110V	90-264VAC	50/60	30.5	31.2
LX-400SH../T4/..230V	90-264VAC	50/60	27.6	28.5

CHANGING CABLE OR SOCKETS

See attached diagrams.

Remove the two securing screws from the cable entry end cap, remove end cap. Disconnect the input cable. To remove the enclosure tube, slide tube over the tray assembly. With the tube removed the blank cap (non linkable Luminaire) or socket and cap (linkable Luminaire) can be removed by removing the two internal screws; care must be taken to retain the sealing washers fitted to the screws and dome nuts. If required the socket cap can then be removed, if the socket is replaced ensure correct sealing washers are used. Re-assembly is the reverse procedure. Take care not to trap/crush wires, ensure all seals are present and in good condition.

FAULT FINDING

If a Wolf LinkEx™ LED Temporary Luminaire fails to function, check input cable continuity and terminations. If satisfactory, test the output fuse to each LED strip. Only replace with Wolf encapsulated fuse of the correct rating. On 24/48V versions replace all fuses to LED strips if either has failed.

SPARE PARTS LIST

See attached diagram.

DISPOSAL OF WASTE MATERIAL

Disposal of packaging, LinkEx™ LED Temporary Luminaire products, old LED trays and electronics should be carried out in accordance with national regulations. (WEEE)

The Wolf Safety Lamp Co. Ltd has a policy of continuous product improvement. Changes in design details may be made without prior notice.

Prices and design are subject to alteration without notice. All products sold are subject to our conditions of sale. A copy of these instructions with any relevant revisions can be found at www.wolf-safety.co.uk

WOLF SAFETY LAMP COMPANY

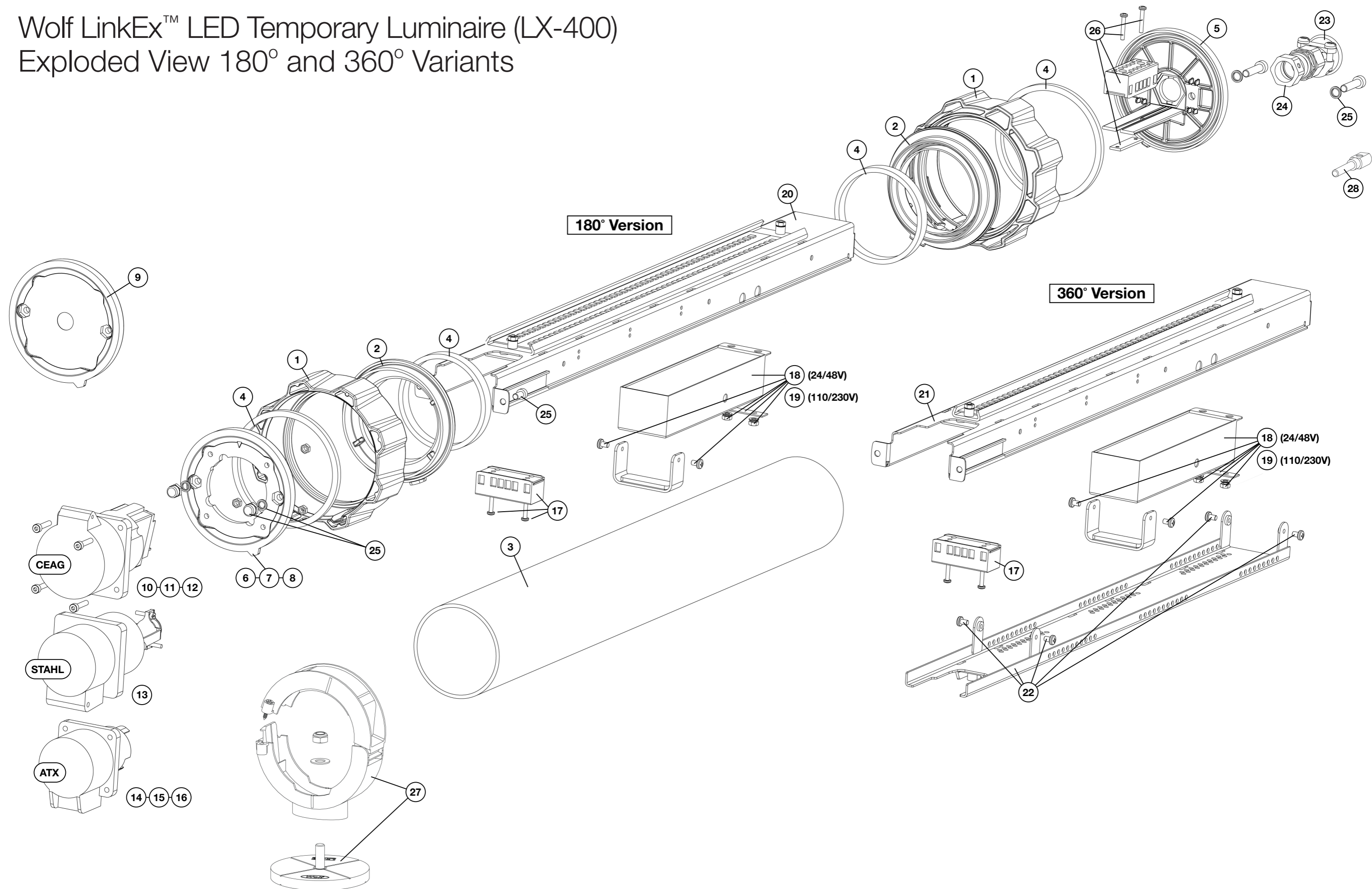
Saxon Road Works, Sheffield, S8 0YA, England

Tel: +44 114 255 1051 Fax: +44 114 255 7988

E-mail: info@wolf-safety.co.uk Website: www.wolf-safety.co.uk



Wolf LinkEx™ LED Temporary Luminaire (LX-400) Exploded View 180° and 360° Variants





Item No.	Part No:	Spare Part Description	Quantity required per lamp	
			180° Models	360° Models
1	LX-602	Bump Ring (pack of 2)	1	1
2	LX-304	Tube Seal Ring (pair)	1	1
3	LX-370	Tube	1	1
4	LX-622	Cap Seal 5mm and Tube Seal 10mm (1 off of each for each end of the lamp)	1	1
5	LX-306	Cable Entry End Cap	1	1
6	LX-312	ATX Socket End Cap	1	1
7	LX-314	Stahl Socket End Cap	1	1
8	LX-310	CEAG Socket End Cap	1	1
9	LX-316	Blank End Cap Non Link	1	1
10	LX-1044	CEAG Socket 110V	1	1
11	LX-1045	CEAG Socket 230V	1	1
12	LX-1043	CEAG Socket 24V	1	1
13	LX-1047	Stahl Socket 110V	1	1
14	LX-1050	ATX Socket 110V	1	1
15	LX-1051	ATX Socket 230V	1	1
16	LX-1049	ATX Socket 24V	1	1
17	LX-684	Ex e 6 Way Weidmuller Terminal Block and Screws M3x20, LED Output	1	1
18	LX-624	24/48V LED Driver and Fittings	1	1
19	LX-640	110/230V LED Driver and Fittings	1	1
20	LX-618	180° LED Strip Assembly and Tray	1	
21	LX-636	360° LED Top Tray Assembly		1
22	LX-637	360° LED Bottom Tray Assembly and Fittings		1
23	LL-311	Trumpet Gland	1	1
24	LX-408	Gland Nut	1	
25	LX-658	Dowty Seals M6, M6x30 Screws, M5 Dome nuts, M5 Dowty Seals and M5x12 Cap Heads (2 of each)	1	1
26	LX-656	Weidmuller MK6 4 Way Terminal Block and Screws M3x22 and Backing Plate, Cable Input	1	1
27	LX-680	Magnet bracket Kit (pack of 2)	1	1
28	LX-1258	M6 External Earth Bonding Stud	1	1
Items not shown on the exploded view diagram				
	LX-691	1 Amp LED Fuse (pack of 2)	1	1
	LX-654	Hanging / Shoulder Strap (pack of 2)	1	1
	LX-545/3	Protective Film (pack of 3)	1	1

