

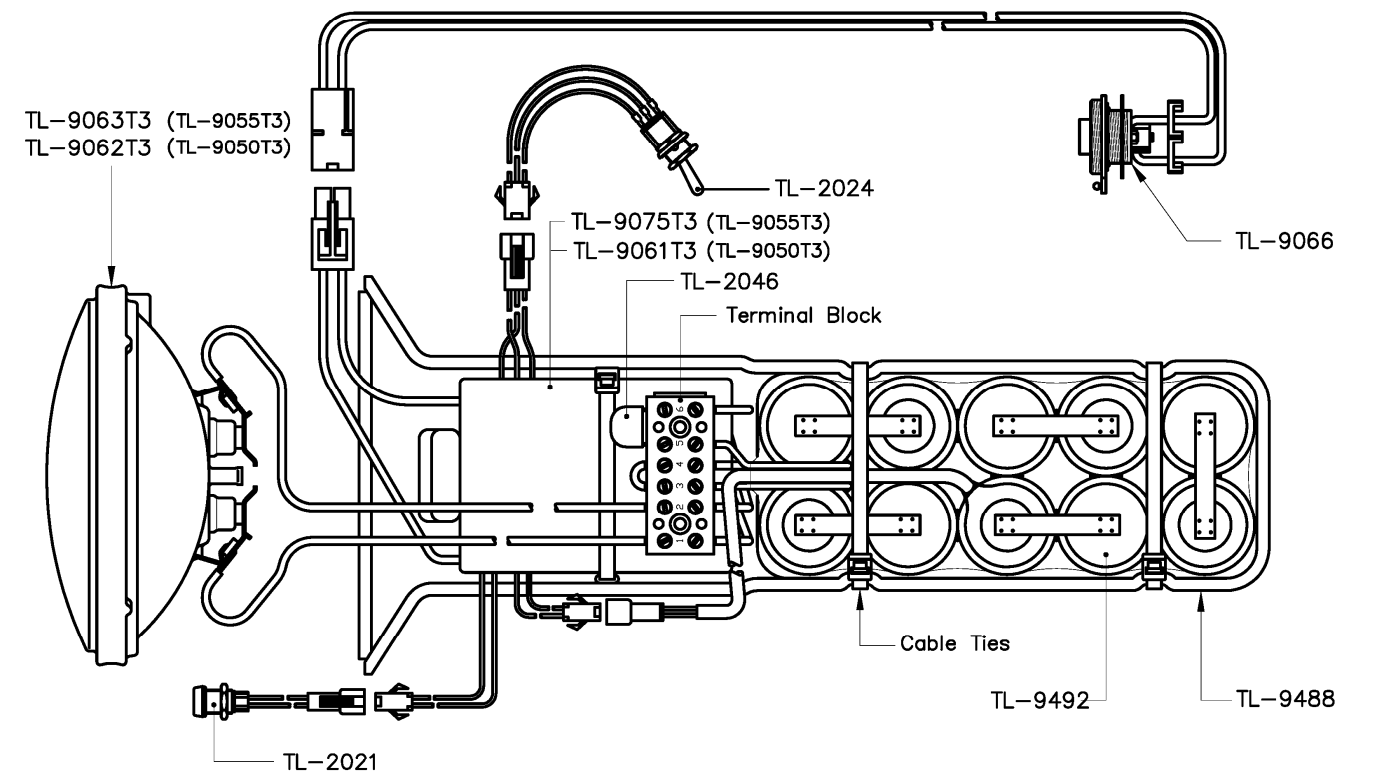
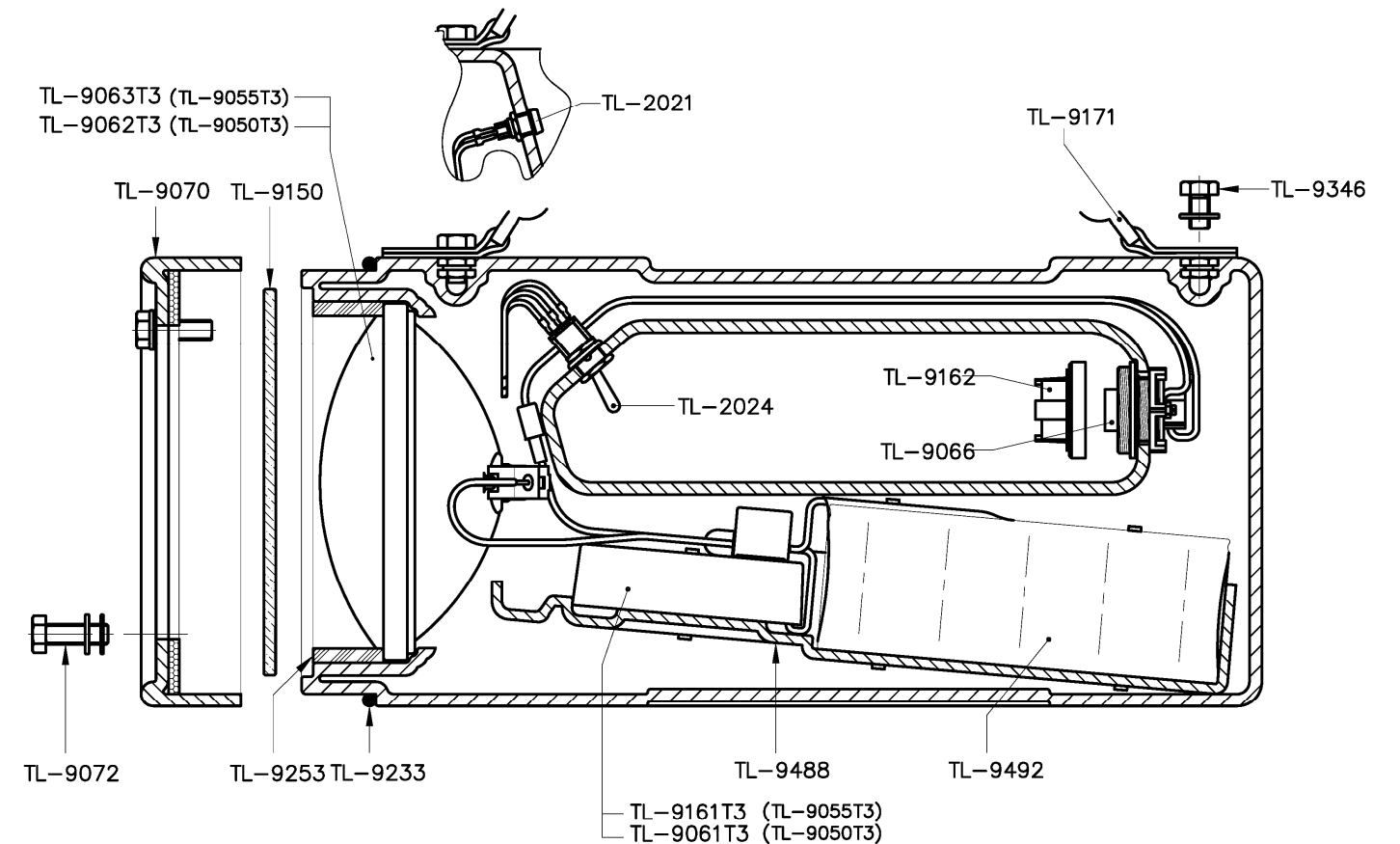
Spare Parts List for  
Toplite Portable Searchlight TL-9050T3 and TL-9055T3

| Part No.  | Description                              |
|-----------|--|
| TL-9062T3 | Sealed Beam Assembly 50 Watt (spot)      |
| TL-9063T3 | Sealed Beam Assembly 35 Watt (flood)     |
| TL-9061T3 | Control Circuit Assembly 50 Watt         |
| TL-9075T3 | Control Circuit Assembly 35 Watt         |
| TL-2021   | State of Charge Indicator Assembly       |
| TL-2024   | Switch Assembly T3                       |
| TL-2046   | Encapsulated 7 Amp Fuse                  |
| TL-9066   | Charging Socket Assembly                 |
| TL-9070   | Lens Cap Complete                        |
| TL-9072   | Retaining Bolt/Washer Set (4)            |
| TL-9150   | Lens (Toughened Glass)                   |
| TL-9162   | Charging Socket Protective Cover         |
| TL-9171   | Shoulder Strap and Fittings              |
| TL-9233   | Filler Piece                             |
| TL-9253   | Flat Seal                                |
| TL-9346   | M8 x 12mm Brass Bolts for Shoulder Strap |
| TL-9488   | Chassis                                  |
| TL-9492   | Battery Assembly                         |

**Wolf Safety Lamp Company**  
Saxon Road Works, Sheffield S8 0YA, England  
**Tel:** +44 114 255 1051 **Fax:** +44 114 255 7988

**Web:** [www.wolf-safety.co.uk](http://www.wolf-safety.co.uk)

Toplite Portable Searchlight TL-9050T3 Spotlight & TL9055T3 Floodlight  
Operation and Maintenance Instructions



Toplite Portable Searchlight - TL-9050T3 and TL-9055T3

## Toplite Portable Searchlight TL-9050T3 Spotlight & TL-9055T3 Floodlight

### Operation and Maintenance Instructions

#### Certification

Code: EEx e m ib IIC T3 Certification: BASEEFA No. Ex92C3405

#### Use of Toplite Searchlight in Hazardous Areas

- The Toplite TL-9050T3 Spotlight and TL-9055T3 Floodlight are for use in potentially explosive **gases, vapours and mists**, zones 1 and 2. Applicable standards: EN50014:1977, EN50019:1977, EN50020:1977, EN50028:1987. The Toplite is **not** approved for use in zone 0.

- Users should consult BS 5345:Part 1:1989 or IEC 79-10 'Code of practice for the selection, installation and maintenance of electrical apparatus for use in potentially explosive atmospheres', or national equivalent.

- Permissible hazardous area ambient: -20°C to +40°C.

- Copies of the Toplite Approval Certificate are available on request.

- Ingress protection for the Toplite Handheld Searchlight: IP67 to EN60529:1992.

- Heavily soiled lamps must not be immersed in water or exposed to high pressure jets for cleaning.

- The Toplite body is anti-static.

- The Toplite has been tested to EMC standards EN50081-1: 1992 and EN 50082-1: 1992 (15.02.96), a declaration of conformity is available on request.

- Lamps must not be charged or opened in hazardous areas. Charging and maintenance must be carried out in a safe area.

- A damaged lamp should be withdrawn, examined and repaired before being put back into service. Maintenance and repair must be carried out by a competent technician or electrician, familiar with certified electrical apparatus, in accordance with these maintenance instructions and using factory supplied spare parts only. Modifications to the Toplite are not permitted.

#### Operation

**To use.** Charge lamp before use. Switch operation positions: up:- **high power** middle:- **off** down:- **low power**

**Mode of Operation.** The Toplite control circuit assembly manages the operation and charging of the lamp, it also shows available battery duration by coloured indicator state. At the end of a discharge, the lamp will automatically switch down to walk-out mode and run for approximately 10 minutes before automatic cut-off. The indication cycle is shown below:

| Discharge Indication Sequence TL-9050T3 & TL9055T3   |                 |  |           |                     |           |
|--|-----------------|--|-----------|---------------------|-----------|
| mode of use  | indicator state | duration of colour state (approximate) |           |                     |           |
|  |                 | TL-9050T3 (50 watt)                    |           | TL-9055T3 (35 watt) |           |
|  |                 | high power                             | low power | high power          | low power |
| main discharge   | green           | 30 mins                                | 60 mins   | 45 mins             | 90 mins   |
|  | amber           | 30 mins                                | 60 mins   | 45 mins             | 90 mins   |
| walk-out mode  | red **          | 10 mins approx.                        |           | 10 mins approx.     |           |
| Total duration   |                 | 70 mins                                | 130 mins  | 100 mins            | 190 mins  |
| ** Note: On reaching red state, lamp automatically switches to low power and pulses every 15 seconds<br>Discharge times may vary with the age of the battery |                 |  |           |                     |           |

#### Charging

**To Charge the Toplite.** Only charge the Toplite T3 with the specified Toplite T3 Charger. Plug the mains charger lead into a 230V mains socket. Remove the charging socket protective cover at the rear of the handle on the Toplite body. Insert the charging plug into the socket, the charge indicator on the Toplite will start to flash to confirm charging. If the indicator does not start to flash, either the charging plug is not correctly fitted or the Toplite is already charged. Replace charging socket protective cover after charging.

**Toplite State of Charge Indicator.** To ensure correct calibration of the state of charge indicator, users are advised that once in every 20 charge/discharge cycles, the Toplite should be fully discharged, past the walk-out mode, until it automatically cuts-off.

**Toplite Power Failure Mode.** The Toplite can be charged with the operation switch in the on position, but the lamp will not illuminate. If power to the charger is then interrupted (i.e. if mains power fails) the Toplite will automatically illuminate.

**Toplite Over-Temperature Warning.** The Toplite has a thermal sensor built into the battery pack, fitted to protect against excessive heat rise during charging or discharging of the battery. In the unlikely event that the battery does exceed temperature limits, the Toplite system will shut down and the indicator will scroll through the three colour states. Allow the Toplite battery to cool for 30 minutes and resume use. If over-temperature problems persist, contact the supplier or manufacturer.

#### Battery Care

To ensure maximum capacity from the battery it is advisable to fully discharge and recharge twice every six months.

#### Toplite Chargers

##### TL-9054T3 (EU lead in, lead out) and TL-9056T3 (UK lead in, lead out)

The Chargers are 'lead in, lead out' style, for use on mains AC voltages of 230 Volts at 50-60Hz. Charging is fully automatic and takes approximately 16 hours, after which it steps down to a trickle charge state, allowing the lamp to be left on charge continuously. The Chargers are CE marked in compliance with the Low Voltage Directive and the EMC Directive, a declaration of conformity is available on request. The Toplite TL-9050T3 and TL-9055T3 Lamps must only be charged with the specified Toplite Charger in a non-hazardous area. Do not use the Toplite Charger with any other type of rechargeable system. Charger operating ambient +10°C to +30°C.

| Charging Indication Sequence TL-9050T3 & TL9055T3  |                     |
|--|---------------------|
| Indicator Colour   | State of charge (%) |
| red flashing   | 0 - 45              |
| amber flashing   | 45 - 90             |
| green flashing   | 90 - 99             |
| green  | 100%                |
| Charging time for a fully discharged lamp is 16 hours; charging times may vary with the age of the battery |                     |

#### Maintenance

**Before working on the Toplite,** ensure it is switched 'off'. Work should never be carried out with the switch in the 'on' position or with the Toplite connected to the Charger.

**To open the Toplite.** Remove the retaining bolts and lens cover from the front of the lamp. Remove the toughened glass disc and flat seal. Remove the sealed beam unit; this may be a tight fit in the lamp cavity in the Toplite body moulding. In some cases the side of the Toplite body can be tapped in order to assist in the removal of the sealed beam unit. Note the orientation of the lamp for refitting. To replace the sealed beam unit, see instructions below.

**To remove the Switch Assembly.** Ensure the switch connector is disconnected. Remove the locking nut from the switch bush on the outside of the lamp. Remove the switch from the inside of the lamp; note orientation for correct refitting.

**To remove the State of Charge Indicator.** This procedure will almost certainly result in damage to the components; users are strongly advised not to carry out such work unless it is considered essential. Ensure the indicator connector is disconnected. Remove the locking nut from the indicator bush on the inside of the Toplite. Pull the indicator housing through from the outside of the lamp. Unscrew the white LED retainer ensuring that the legs of the LED are not strained. Pull the LED out of the indicator housing. The LED with leads and connector attached can now be removed through the inside of the Toplite.

##### To carry out any further work the Chassis must be removed

**To remove the Chassis.** Remove the two retaining nuts from the front flanges of the Chassis; use a hex key to prevent retaining screws from turning. Disconnect all connectors and withdraw the Chassis from the Toplite body. When re-assembling, check with diagram to ensure parts are assembled correctly, check that rubber seal is undamaged.

**To replace the Sealed Beam Unit.** Loosen the two screws on the terminal block holding the yellow lamp wires. The wires can be removed and wires from a replacement sealed beam unit fitted and the screws tightened.

**To replace the Fuse.** Loosen the two screws on the terminal block holding the Fuse. The Fuse can be removed and a replacement fitted and the screws tightened.

**To remove the control circuit assembly.** Ensure that all connectors are disconnected and all wires from the terminal block to other components are removed. **CAUTION, prevent the wires from the battery pack touching each other.** Cut the cable tie holding the control circuit assembly in place and remove from the chassis. The refitting is the reverse procedure.

**To remove the Battery Pack.** Ensure the connector from the battery pack to the control circuit assembly is disconnected. Cut the two cable ties holding the battery pack into the chassis. Loosen the two screws on the terminal block holding the wires from the battery pack, withdraw the wires. **CAUTION, ensure the wires do not touch.** The battery pack can now be removed from the chassis. The refitting of a new battery pack is the reverse procedure. Ensure the connecting wires are tightly clamped in the terminal block and the cable ties are replaced.

Note: When the battery pack is disconnected from the control circuit assembly, the system is reset to zero capacity. The Toplite must be recharged before further use.

**The Toplite Battery** is a Nickel Cadmium cell system, providing up to 1000 charge and discharge cycles. The pack is specifically designed to comply with the requirements of electrical equipment for use in potentially explosive atmospheres and must not be replaced with any non-Wolf component. For optimum performance and safety please observe the following:

#### Warning:

- Charge before first use
- Recharge immediately when flat. Recharge every three months when in storage.
- Do not incinerate or short circuit. Do not cut, crush or puncture
- Dispose of battery via a licensed disposal agency. Do not charge other than from a Wolf Charger

Note: Dangerous goods regulations, hazardous materials regulations, restricted articles regulations

The US Department of Transport, IATA and CAA declare these batteries as 'non-regulated'.

The Wolf Safety Lamp Company has a policy of continuous product review and improvement, changes in design details may be made without prior notice.

All performance values given have been attained under laboratory conditions, the user must regard these values as approximate.